

Online Research @ Cardiff

This is an Open Access document downloaded from ORCA, Cardiff University's institutional repository: <http://orca.cf.ac.uk/106078/>

This is the author's version of a work that was submitted to / accepted for publication.

Citation for final published version:

Culshaw, Abigail, Ladell, Kristin, Gras, Stephanie, McLaren, James, Miners, Kelly, Farenc, Carine, van den Heuvel, Heleen, Gostick, Emma, Dejnirattisai, Wanwisa, Wangteeraprasert, Apirath, Duangchinda, Thaneeya, Chotiyarnwong, Pojchong, Limpitikul, Wannee, Vasanaathana, Sirijitt, Malasit, Prida, Dong, Tao, Rossjohn, Jamie, Mongkolsapaya, Juthathip, Price, David A. and Sreaton, Gavin R. 2017. Germline bias dictates cross-serotype reactivity in a common dengue-virus-specific CD8+ T cell response. *Nature Immunology* 18 , pp. 1228-1237. 10.1038/ni.3850
filefilefilefilefilefilefilefilefilefilefilefilefilefilefilefile

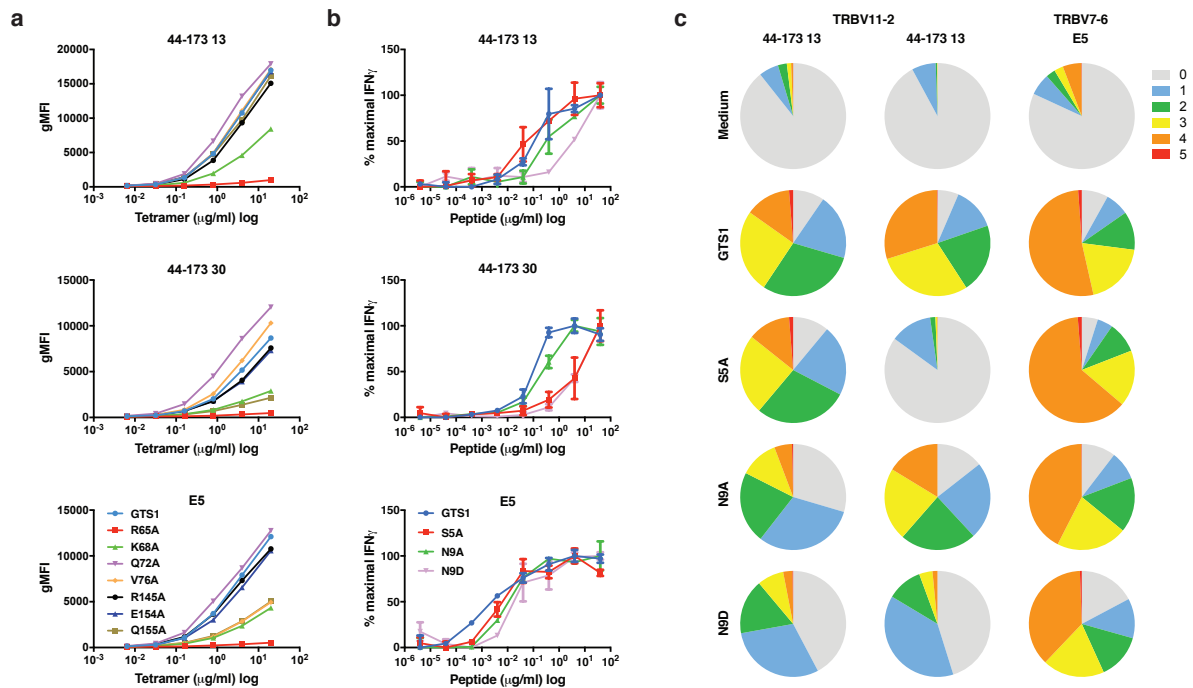
Publishers page: <http://dx.doi.org/10.1038/ni.3850> <<http://dx.doi.org/10.1038/ni.3850>>

Please note:

Changes made as a result of publishing processes such as copy-editing, formatting and page numbers may not be reflected in this version. For the definitive version of this publication, please refer to the published source. You are advised to consult the publisher's version if you wish to cite this paper.

This version is being made available in accordance with publisher policies. See <http://orca.cf.ac.uk/policies.html> for usage policies. Copyright and moral rights for publications made available in ORCA are retained by the copyright holders.





Supplementary Figure 12 Recognition of HLA-A*11:01 and GTS1 mutants by NS3₁₃₃ DENV-specific CD8⁺ T cell clones. **(a)** Avidity of the NS3₁₃₃ DENV-specific CD8⁺ T cell clones 44-173 13 (D13) and 44-173 30 (D30) for the indicated HLA-A*11:01-GTS1 mutant tetramers. The TRBV7-6⁺ NS3₁₃₃ DENV-specific CD8⁺ T cell clone E5 was included as a control. Data represent three independent experiments. Error bars indicate SD. gMFI, geometric mean fluorescence intensity. **(b)** Functional sensitivity of the NS3₁₃₃ DENV-specific CD8⁺ T cell clones 44-173 13 (D13) and 44-173 30 (D30) for the indicated GTS1 mutant peptides in IFN- γ ELISpot assays. The TRBV7-6⁺ NS3₁₃₃ DENV-specific CD8⁺ T cell clone E5 was included as a control. Data represent three independent experiments. Error bars indicate SD. **(c)** Effector function profiles for the NS3₁₃₃ DENV-specific CD8⁺ T cell clones 44-173 13 (D13) and 44-173 30 (D30) stimulated with the indicated GTS1 mutant peptides. The TRBV7-6⁺ clone E5 was included as a control. Five readouts were measured by flow cytometry (CD107a, MIP-1 β , TNF- α , IFN- γ , and IL-2). Data represent two independent experiments. Pie chart segments depict the fraction of cells expressing the number of functions indicated in the key.